



**LOT 2**  
 THIRD STREET  
 MONTVERDE, FL 34756  
**VICTORIA**

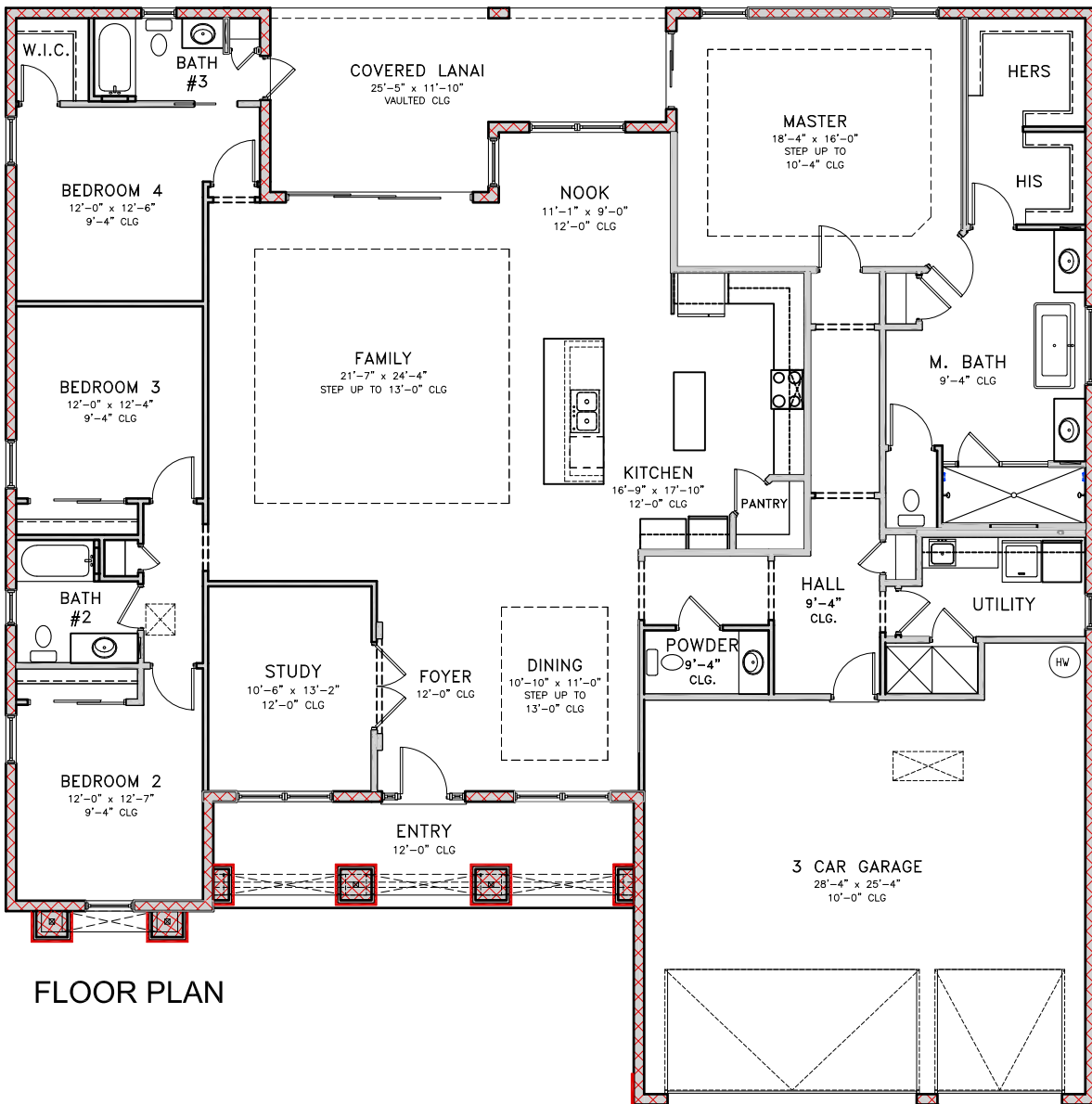
4 BEDROOM 3-1/2 BATH  
 W/ 3 CAR GARAGE  
 70'-0" x 70'-5"

www.PillarHomes.us  
 1312 BOWMAN ST. CLERMONT, FL.  
 PH (352) 394-1032  
 FAX (352) 394-1794

1ST FLOOR	3202
GARAGE	793
LANAI	249
ENTRY	184
<b>TOTAL</b>	<b>4428</b>



**ELEVATION**



**FLOOR PLAN**

DISCLAIMER: PLANS AND ELEVATIONS ARE ARTIST'S RENDERINGS AND MAY CONTAIN OPTIONS, WHICH ARE NOT STANDARD ON ALL MODELS. WE RESERVE THE RIGHT TO MAKE CHANGES TO THESE FLOOR PLANS, SPECIFICATIONS, DIMENSIONS, AND ELEVATIONS WITHOUT PRIOR NOTICE. STATED DIMENSIONS AND SQUARE FOOTAGE ARE APPROXIMATE AND SHOULD NOT BE USED AS REPRESENTATION OF THE HOME'S SIZE. "OPT." IS THE ABBREVIATION FOR OPTIONAL.

LIC. #CGC1520441