



PILLAR HOMES

www.PillarHomes.us

1312 BOWMAN ST. CLERMONT, FL.
PH (352) 394-1032 FAX (352) 394-1794

LOT 5

FOURTH STREET
MONTVERDE, FL 34756

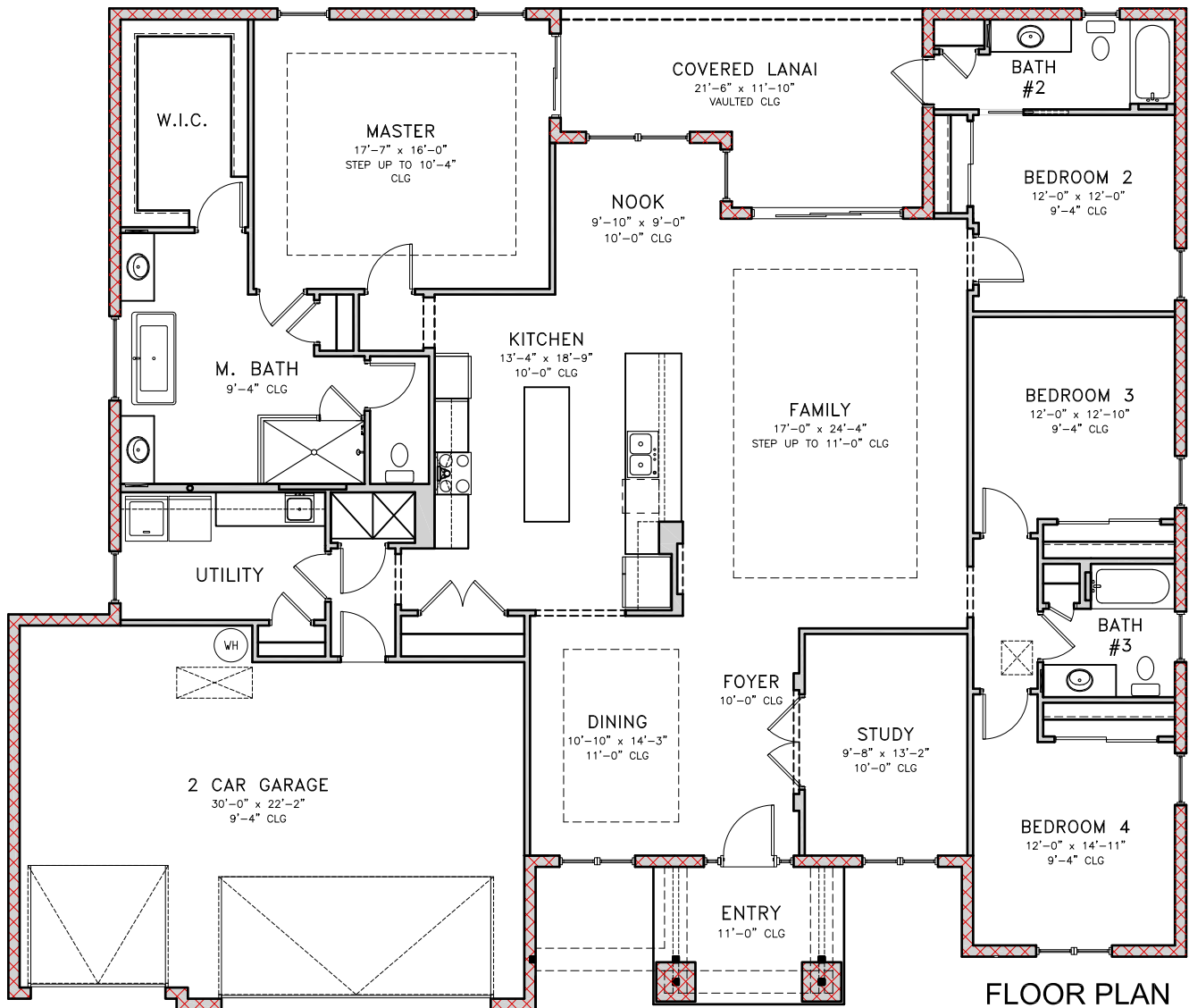
JULLIEN PLUS

4 BEDROOM 3 BATH
W/ 3 CAR GARAGE
70'-0" x 59'-6"

1ST FLOOR	2808
GARAGE	668
LANAI	209
ENTRY	93
TOTAL	3778



ELEVATION



FLOOR PLAN

DISCLAIMER: PLANS AND ELEVATIONS ARE ARTIST'S RENDERINGS AND MAY CONTAIN OPTIONS, WHICH ARE NOT STANDARD ON ALL MODELS. WE RESERVE THE RIGHT TO MAKE CHANGES TO THESE FLOOR PLANS, SPECIFICATIONS, DIMENSIONS, AND ELEVATIONS WITHOUT PRIOR NOTICE. STATED DIMENSIONS AND SQUARE FOOTAGE ARE APPROXIMATE AND SHOULD NOT BE USED AS REPRESENTATION OF THE HOME'S SIZE. "OPT." IS THE ABBREVIATION FOR OPTIONAL.

LIC. #CGC1520441